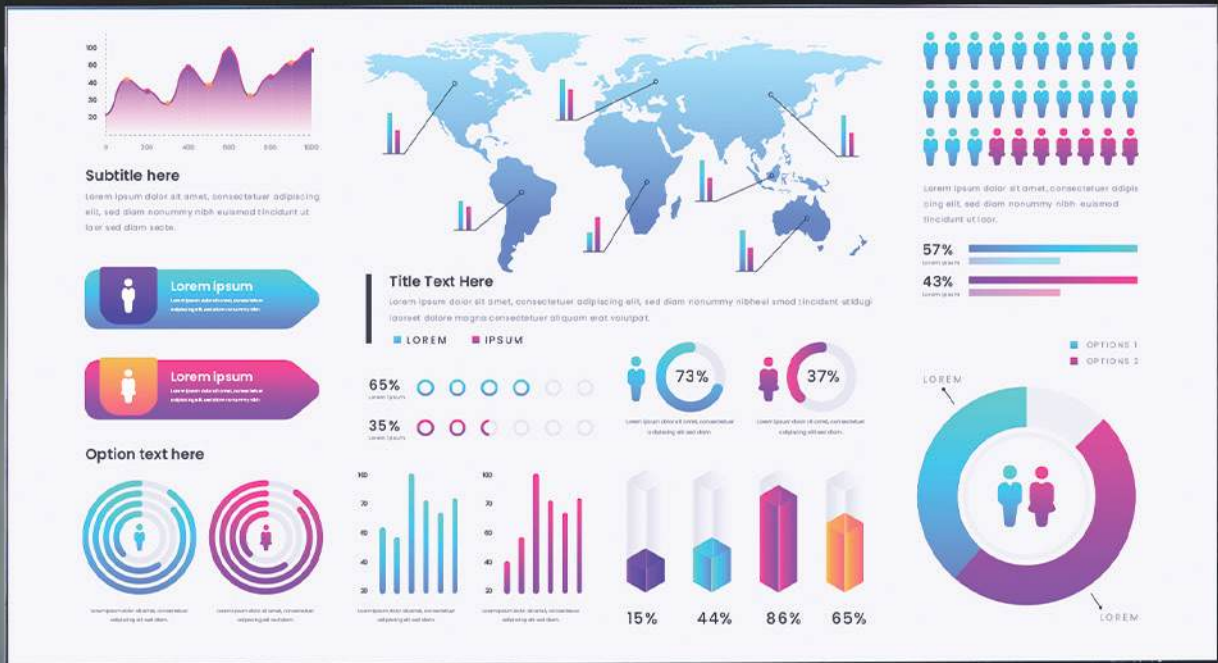


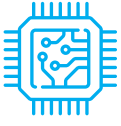


C Series

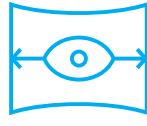
LED All-In-One



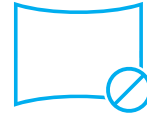
Product Features



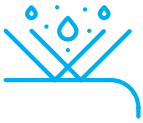
- AIO (All In One) with all the advantages of COB (Chip On Board Technology)



- Wide Viewing Angles with easy surface cleaning



- Anti collision, anti dust, anti scratch, anti static



- Module with water proof surface



- Low power consumption helps to lower running costs



- High contrast with a smooth surface finish affords easy cleaning with cloth dipped in water



- Available in both Full HD and 4K-UHD resolutions



- Plug and play



- Integrated audio



- Built in wireless presentation



- IR Remote Controlled



- Multipurpose applications like conference rooms, boardrooms, home theaters, lobbies, hotels etc.



- Flexible mounting options - wall mount, pedestal or ceiling mount

Product Specifications

Model Name	AIO-C108	AIO-C135	AIO-C162	AIO-C135 UHD
Display size Diagonal (inch)	108	135	162	135
Pixel pitch (mm)	1.25	1.5625	0.9375	0.78125
Screen Size W*H mm	2400*1350	3000*1687.5	3600*2025	3000*1687.5
Display Dimensions W*H*D (mm)	2411*1476*30.4	3011*1813.5*30.4	3611*2151*30.4	3011*1813.5*30.4
Aspect Ratio	16:9	16:9	16:9	16:9
Screen Resolution (W*H)	1920*1080 (Full HD)	1920*1080 (Full HD)	3840*2160 (4K-UHD)	3840*2160 (4K-UHD)
Cabinet Material	Aluminum	Aluminum	Aluminum	Aluminum
Maintenance Access	Front	Front	Front	Front
Life of LED (Hrs)	≥150000	≥150000	≥150000	≥150000
Viewing Angle H/V(degrees)	170/170	170/170	170/170	170/170
Brightness Typical (cd/m2)	600 (adjustable up or down)	600 (adjustable up or down)	600 (adjustable up or down)	600 (adjustable up or down)
Brightness Uniformity	≥98%	≥98%	≥98%	≥98%
Refresh Rate (Hz)	3840	3840	3840	3840
Typical Contrast Ratio	25,000:1	25,000:1	25,000:1	25,000:1
Color Temperature (K)	2000~9500K	2000K~9500K	2000~9500K	2000K~9500K
Memory/Storage	DDR4 4GB+ eMMC 32GB	DDR4 4GB+ eMMC 32GB	DDR4 4GB+ eMMC 32GB	DDR4 4GB+ eMMC 32GB
Inputs	2*HDMI	2*HDMI	2*HDMI	2*HDMI
	3*USB 3.0	3*USB 3.0	3*USB 3.0	3*USB 3.0
	1*SPDIF	1*SPDIF	1*SPDIF	1*SPDIF
	1*USB 2.0	1*USB 2.0	1*USB 2.0	1*USB 2.0
	1*RJ45	1*RJ45	1*RJ45	1*RJ45
Outputs	1*Audio Out	1*Audio Out	1*Audio Out	1*Audio Out
	1*RJ45	1*RJ45	1*RJ45	1*RJ45
WiFi	2.4G/5G	2.4G/5G	2.4G/5G	2.4G/5G
Bluetooth	5.0	5.0	5.0	5.0
Remote Control Operation	IR Remote	IR Remote	IR Remote	IR Remote
Speakers	Built In	Built In	Built In	Built In
Rated Power	2*12W	2*12W	2*12W	2*12W
Frequency Response	90~20000Hz	90~20000Hz	90~20000Hz	90~20000Hz
Sound Pressure level SPL	80 dB	80 dB	80 dB	80 dB
Operating Voltage	AC 100 V ~ 240 V, 50/60Hz	AC 100 V ~ 240 V, 50/60Hz	AC 100 V ~ 240 V, 50/60Hz	AC 100 V ~ 240 V, 50/60Hz
Maximum Power Consumption (W)	880	1013	2190	1500
Average Power Consumption (W)	320	405	876	875
Weight (kg)	80	126	180	135
Operating Temperature/ Humidity	-10°C~+45°C/ 10~90% RH	-10°C~+45°C/ 10~90% RH	-10°C~+45°C/ 10~90% RH	-10°C~+45°C/ 10~90% RH
Storage Temperature/ Humidity	-20°C~+50°C/ 10~90% RH	-20°C~+50°C/ 10~90% RH	-20°C~+50°C/ 10~90% RH	-20°C~+50°C/ 10~90% RH
Maximum Working Altitude	0~2000M	0~2000M	0~2000M	0~2000M

©A2024 Delta Electronics India Pvt. Ltd. Values, weights and dimensions shown are approximate. Specifications are subject to change without prior notice. Images are representative only and the actual product may look different.